

30 October 2019

## **Quarterly Activities Report September 2019**

Marquee Resources Limited (“**Marquee**” or the “**Company**”) (ASX:MQR) is pleased to provide the Quarterly Activities Report for the September 2019 quarter.

### **Centenario Lithium Project**

The Company held a general shareholders meeting on the 15<sup>th</sup> August 2019 where shareholders approved the acquisition of Centenario Lithium Limited (“CLL”) and the issue of shares to the sellers of Centenario Lithium Limited. Approval to Issue 10 million fully paid shares at 10 cents per share as part of a placement was also approved by shareholders at this meeting. These shares were issued on 21<sup>st</sup> August 2019 to sophisticated and professional investors raising one million dollars (\$1,000,000) before costs.

On the 5<sup>th</sup> September the acquisition of CLL was completed and 10,075,000 fully paid shares were issued to the sellers of Centenario Lithium Limited as part of the consideration.

Mr John Daniel Moore was appointed a Non-Executive Director as CLL’s nominee under the agreement.

A timetable of exploration work is currently being prepared in conjunction with joint venture partner Lithium Power International Ltd (ASX:LPI) and Marquee will update the market once this has been finalised.

### **The Redlings Project**

The Company completed an initial desktop study into the Redlings REE Project located near Leonora in Western Australia. Recently purchased detailed multiclient aeromagnetic data, which covers 75% of the lease area with 50m line spaced data, formed a significant part of the review and outlined an alternative structural framework and potential new kimberlite targets captured by the project.

The study identified several discrepancies in the legacy exploration data that require validation via a simple ground program before a more detailed program begins. The inconsistencies include the disagreement between drill collar locations contained in the historical reports and other available publicly available domain information and to confirm the extent of actual auger work within the southern parts of the tenure.

The detailed survey promoted a fresh interpretation of the target area and the development of new areas of investigation for further kimberlite and REE mineralisation. Multiple samples of the kimberlite dyke previously returned anomalous REO mineralisation with REE values up to 12.8% TREO (See ASX release 25 June 2019).

A timetable of exploration work is currently being prepared in conjunction with Marquee’s geological teams and will be released to the market shortly.

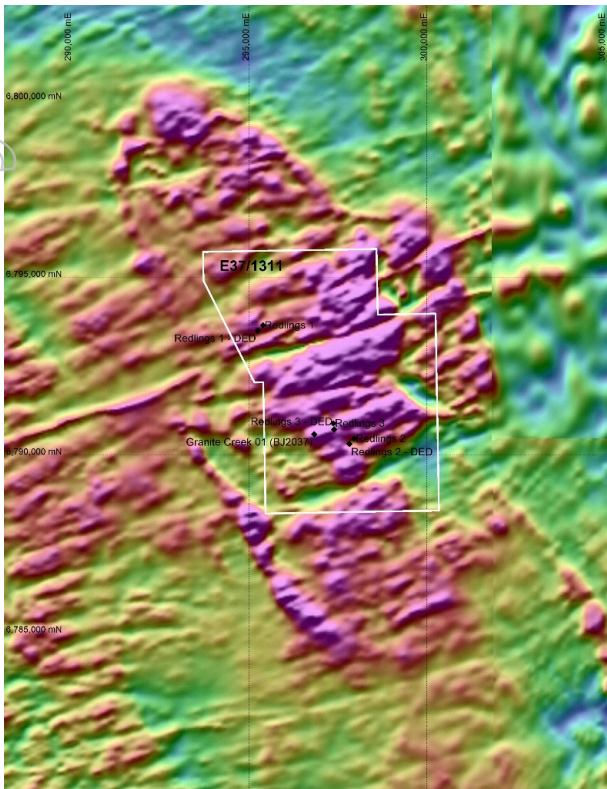


Image 1.

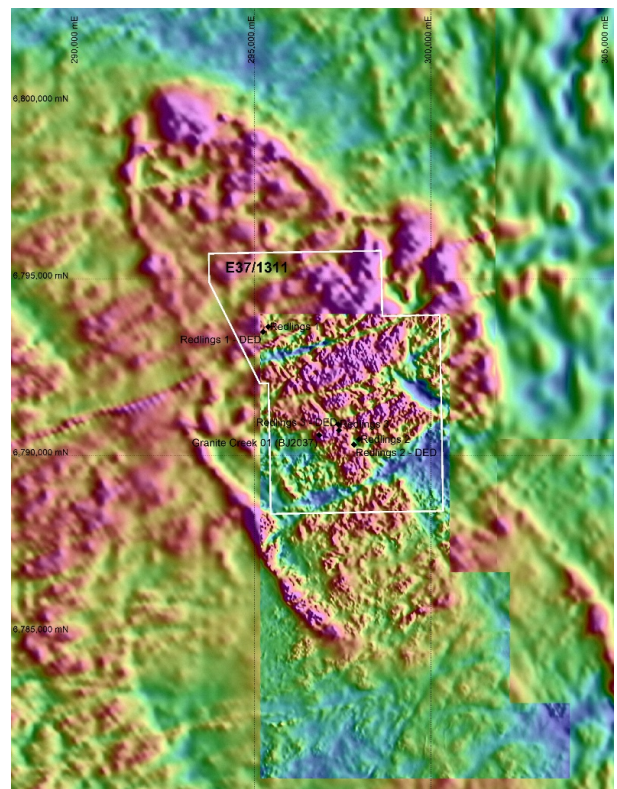


Image 2.

The extents and higher resolution of the detailed aeromagnetic survey of the Redlings deposit are apparent in the lower southeast quadrant of image 2 above.



Image 3. (Redlings Project Area E37/1311)

**Corporate**

On the 27<sup>th</sup> September 2019 the Company released its 2019 Annual Report and Corporate Governance Statement. The Notice of Meeting for the Annual General Meeting to be held 30 October 2019 was also released to the market.

**For further information please contact:**

*Charles Thomas*

Charles Thomas – Executive Chairman  
Marquee Resources  
[info@marqueeresources.com.au](mailto:info@marqueeresources.com.au)

### **Tenement Schedule (Disclosure per ASX Listing Rule 5.3.3)**

Tenements held at end of the quarter by Marquee Resources and subsidiary companies.

| TENEMENT                      | LOCATION        | NAME           | INTEREST |
|-------------------------------|-----------------|----------------|----------|
| CVE 1                         | Nevada USA      | Clayton Valley | 100%     |
| CVE 3-4                       | Nevada USA      | Clayton Valley | 100%     |
| CVE 8-17                      | Nevada USA      | Clayton Valley | 100%     |
| CVE19-75                      | Nevada USA      | Clayton Valley | 100%     |
| CVE 81-82                     | Nevada USA      | Clayton Valley | 100%     |
| CVE 84                        | Nevada USA      | Clayton Valley | 100%     |
| CVE 86-102                    | Nevada USA      | Clayton Valley | 100%     |
| CVE 119-126                   | Nevada USA      | Clayton Valley | 100%     |
| CVE 143 – 150                 | Nevada USA      | Clayton Valley | 100%     |
| KRL 98381-83                  | Kenora, Ontario | Werner Lake    | 30%      |
| 9385-87, 19096/97             | Kenora, Ontario | Werner Lake    | 30%      |
| 19107-12                      | Kenora, Ontario | Werner Lake    | 30%      |
| 29054/55, 29058-76            | Kenora, Ontario | Werner Lake    | 30%      |
| 30055 -58, 31229              | Kenora, Ontario | Werner Lake    | 30%      |
| 31373/74, 31823-28            | Kenora, Ontario | Werner Lake    | 30%      |
| 33170-72, 33175-96            | Kenora, Ontario | Werner Lake    | 30%      |
| 33198 -212, 33240             | Kenora, Ontario | Werner Lake    | 30%      |
| 33270/1, 33280-84             | Kenora, Ontario | Werner Lake    | 30%      |
| 33328-33, 33416               | Kenora, Ontario | Werner Lake    | 30%      |
| 33419, 33421-23               | Kenora, Ontario | Werner Lake    | 30%      |
| 36272, 33173-4                | Kenora, Ontario | Werner Lake    | 30%      |
| 10661                         | Kenora, Ontario | Werner Lake    | 30%      |
| 12128                         | Kenora, Ontario | Werner Lake    | 30%      |
| 12246 -12247                  | Kenora, Ontario | Werner Lake    | 30%      |
| 12501                         | Kenora, Ontario | Werner Lake    | 30%      |
| 13150 - 13151                 | Kenora, Ontario | Werner Lake    | 30%      |
| 13283 - 13284                 | Kenora, Ontario | Werner Lake    | 30%      |
| 13292                         | Kenora, Ontario | Werner Lake    | 30%      |
| E37/1311                      | W Australia     | Redlings       | 100%     |
| Centenario 3                  | Argentina       | Centenario     | 30%      |
| Centenario 4                  | Argentina       | Centenario     | 30%      |
| Centenario 5                  | Argentina       | Centenario     | 30%      |
| Centenario 6                  | Argentina       | Centenario     | 30%      |
| Centenario 200                | Argentina       | Centenario     | 30%      |
| Centenario 201                | Argentina       | Centenario     | 30%      |
| Bientenario 303               | Argentina       | Centenario     | 30%      |
| <b>Total Number of Claims</b> | <b>397</b>      |                |          |